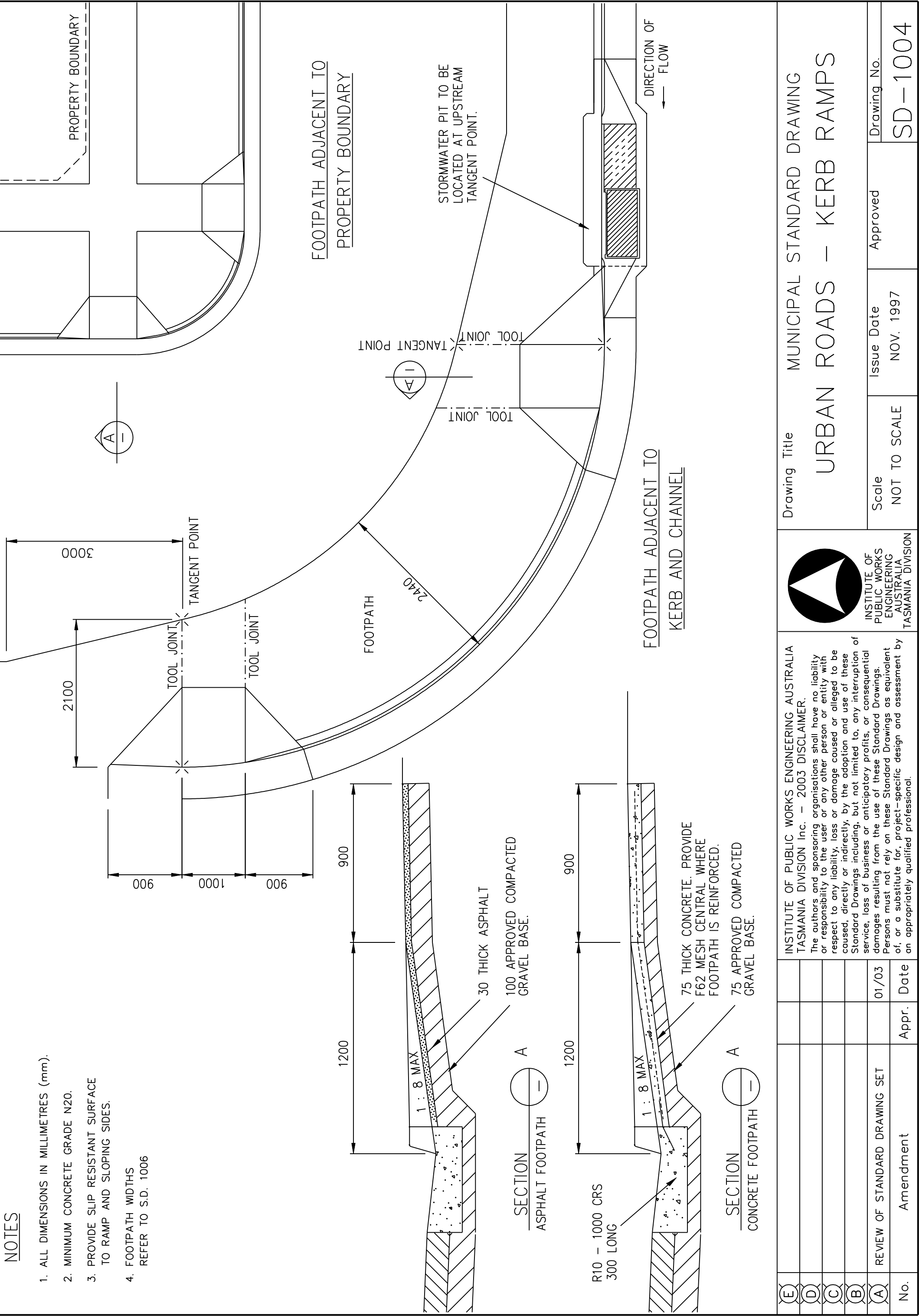
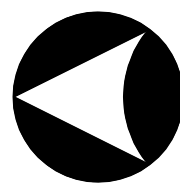


**NOTES**

1. ALL DIMENSIONS IN MILLIMETRES (mm).
2. MINIMUM CONCRETE GRADE N20.
3. PROVIDE SLIP RESISTANT SURFACE TO RAMP AND SLOPING SIDES.
4. FOOTPATH WIDTHS REFER TO S.D. 1006



E	D	C	B	A	No.	Amendment	Appr.	Date	01/03	INSTITUTE OF PUBLIC WORKS ENGINEERING AUSTRALIA TASMANIA DIVISION Inc. - 2003 DISCLAIMER. The authors and sponsoring organisations shall have no liability or responsibility to the user or any other person or entity with respect to any liability, loss or damage caused or alleged to be caused, directly or indirectly, by the adoption and use of these Standard Drawings including, but not limited to, any interruption of service, loss of business or anticipatory profits, or consequential damages resulting from the use of these Standard Drawings. Persons must not rely on these Standard Drawings as equivalent of, or a substitute for, project-specific design and assessment by an appropriately qualified professional.	 INSTITUTE OF PUBLIC WORKS ENGINEERING AUSTRALIA TASMANIA DIVISION	Drawing Title <b>MUNICIPAL STANDARD DRAWING</b> <b>URBAN ROADS - KERB RAMPS</b>	Scale NOT TO SCALE	Issue Date NOV. 1997	Approved	Drawing No. <b>SD-1004</b>
						REVIEW OF STANDARD DRAWING SET										